

Repois R

One coat mortar with scratched finish

Description:

REPOIS R consists of a cement based external through coloured render. It is formed by a mortar that is freshly applied and allowed to dry partially. A special trowel is then used so as to obtain a decorative scratched finish.

UNE 998-1 - Dit Plus 430-p

Uses

It is used for rendering facades made of blockwork or brickwork. It also gives uniformity to new jobs performed on concrete, brickwork, etc. It is also used for restoring purposes so as to replace paints and plastic renders.

Surface preparation:

The background of application must be clean, resistant, free of grease, oil, uniform, free of any ridges or irregularities, by being slightly damp.

Technical features:

Adherence > 2.5 kg/cm²

Capillarity < 0.50% in 60 minutes

Compressive resistance > 80 kg/cm²

Curing density 1.800 ± 0.05 g/cc.

Mass of density 1.750 ± 0.05 g/cc.

Powder density 1.350 ± 0.05 g/cc.

Resistance to longitudinal tear > 35 kg/cm²

Water absorption 19 ± 3%

Water retention > 97%



- Waterproofing
- Maximum resistance
- Excellent durability
- Enhanced decorative properties

Packaging: 25 Kg

Coverage: 20kg and 22kg per m² for white colour.



Application:

- Mix with water in a proportion of $19 \pm 3\%$ of water in weight, manually or mechanically (concrete mix, slow mixer, etc).

- Apply the fresh mortar mix onto the support to be rendered using a trowel and then smoothen with a ruler. Proceed to limit the piers by placing the joints in the desired pattern: 7 m vertically and 2.5 m horizontally). Leave to dry partially.

After 24 hours (depending on weather conditions), use a special trowel so as to achieve a scraped finish.

- It is recommended to apply at least 10 mm thick coating and reaching an average thickness of 15 mm.



Repois R

One coat mortar with scratched finish



withe



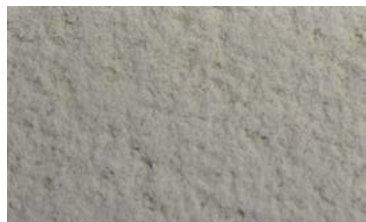
ocher



pink



green



ivory



yellow



salmon



grey



cream



toasted



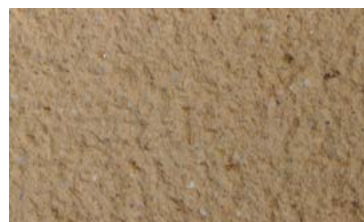
tile



grey 10



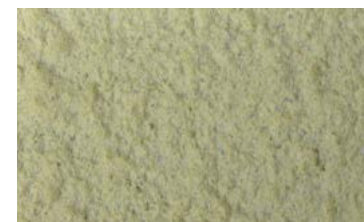
sand



brown



terracotta



moss



Description:

REPOIS R consists of a cement based external through coloured render. It is formed by a mortar that is freshly applied and allowed to dry partially. A special trowel is then used so as to obtain a decorative scratched finish.

Uses:

It is used for rendering facades made of blockwork or brickwork. It also gives uniformity to new jobs performed on concrete, brickwork, etc. It is also used for restoring purposes so as to replace paints and plastic renders.

Features & benefits:

WATERPROOFING.MAXIMUM RESISTANCE.EXCELLENT DURABILITY.ENHANCED DECORATIVE PROPERTIES.

Surface preparation:

The background of application must be clean, resistant, free of grease, oil, uniform, free of any ridges or irregularities, by being slightly damp.

Clean up:

Clean using large amounts of water.

Application

- Mix with water in a proportion of $19 \pm 3\%$ of water in weight, manually or mechanically(concrete mix, slow mixer, etc).
- Apply the fresh mortar mix onto the support to be rendered using a trowel and then smoothen with a ruler. Proceed to limit the piers by placing the joints in the desired pattern: 7 m vertically and 2.5 m horizontally). Leave to dry partially. After 24 hours(depending on weather conditions), use a special trowel so as to achieve a scraped finish.
- It is recommended to apply at least 10 mm thick coating and reaching an average thickness of 15 mm.

Packaging:

Available in packs of:

25 Kilos

Storage:

It is recommended to store this product for 1 year in tightly closed original packages.

Health and safety advice:

Consult the safety information on the label on each package, and for more information refer to the product Material Safety Data Sheet.

Technical features:

Adherence	> 2.5 kg/cm ²
Capillarity	< 0.50% in 60 minutes
Colour/s	gris, blanco, crema, castilla, ocre, rosa, etc. (various colours according to colour chart).
Compressive resistance	> 80 kg/cm ²
Curing density	1.800 ± 0.05 g/cc.
Mass of density	1.750 ± 0.05 g/cc.
Powder density	1.350 ± 0.05 g/cc.
Resistance to longitudinal tear	> 35 kg/cm ²
Water absorption	$19 \pm 3\%$
Water retention	> 97%

Coverage:

20kg and 22kg per m² for white colour.

The information provided on this technical data sheet and particularly the recommendations for the application and use of the product is based on our current knowledge and are provided in good faith, considering that the products are used, handled and stored under normal conditions and within the limits of its useful life. The possible differences between the materials, supports, and real conditions in the application site can be so important that it is no possible to establish a warranty with this document or any other information provided. The user must verify with a suitability test that the product conforms to the required use. Users should refer to the information included in the last technical data sheet edition.



PROFESIONAL CONSTRUCTIVE SOLUTIONS

©TEAIS S.A. - All rights reserved - Avda. da Enerxía, nº 153, Pol. Ind. de Sabón - 15143 Arteixo, A Coruña
Telf.: 981 602 111 - Fax: 981 601 508 - Email: comex@teais.es

